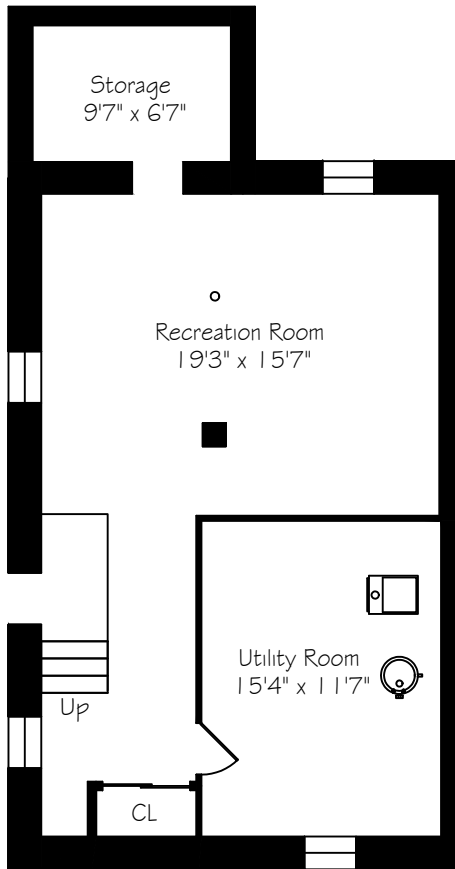
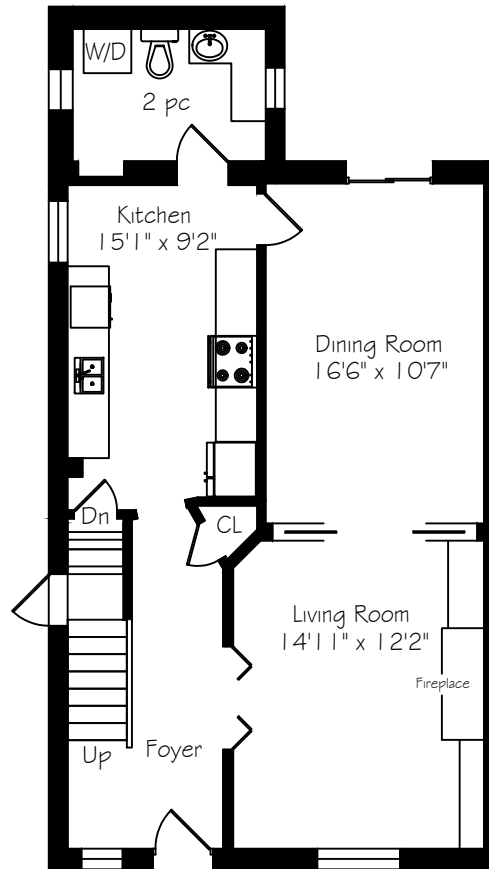


26 Edgewood Crescent

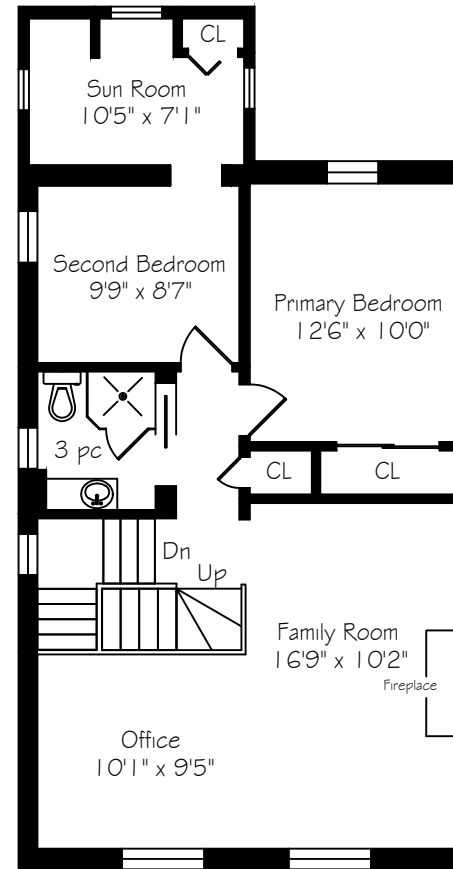


Lower Level
820 Square Feet

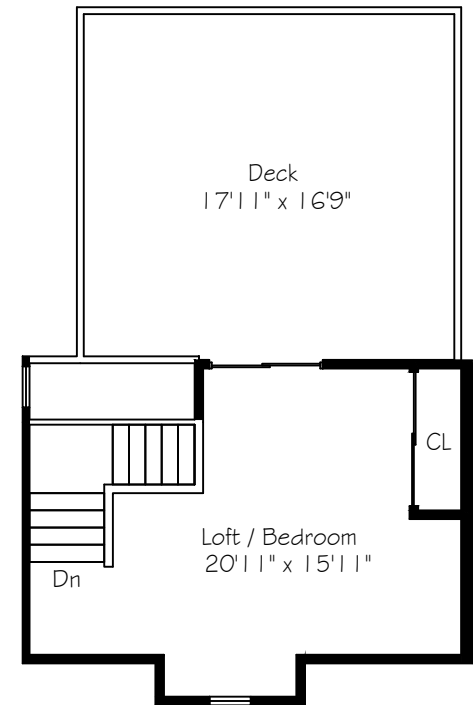


Main Floor
820 Square Feet

Measurements and Calculations are approximate
To be used as guidelines only
www.measuredup.ca



Second Floor
820 Square Feet



Third Floor
316 Square Feet
+ 300 Deck

26 Edgewood Crescent Metric Conversions

Measurements and Calculations are approximate

To be used as guidelines only

	IMPERIAL			METRIC			
Main Floor	820	sf		76	sqm	Ceiling Height	9'0"
Foyer	16'	0"	x 7' 6"	4.88	x 2.29		
Kitchen	15'	1"	x 9' 2"	4.60	x 2.79		
Dining Room	16'	6"	x 10' 7"	5.03	x 3.23		
Living Room	14'	11"	x 12' 2"	4.55	x 3.71		
Second Floor	820	sf		76	sqm	Ceiling Height	8'3"
Primary Bedroom	12'	6"	x 10' 0"	3.81	x 3.05		
Second Bedroom	9'	9"	x 8' 7"	2.97	x 2.62		
Sun Room	10'	5"	x 7' 1"	3.18	x 2.16		
Office	10'	1"	x 9' 5"	3.07	x 2.87		
Family Room	16'	9"	x 10' 2"	5.11	x 3.10		
Third Floor	316	sf		29	sqm	Ceiling Height	7'1"
Loft/Bedroom	20'	11"	x 15' 11"	6.38	x 4.85		
Lower Level	820	sf		76	sqm	Ceiling Height	6'3"
Recreation Room	19'	3"	x 15' 7"	5.87	x 4.75		
Storage	9'	7"	x 6' 7"	2.92	x 2.01		
Utility Room	15'	4"	x 11' 7"	4.67	x 3.53		
Total Square Footage	2776	sf		258	sqm		
Deck	300	sf		28	sqm		
	17'	11"	x 16' 9"	5.46	x 5.11		
Total Area Measured	3076	sf		286	sqm		July 10, 2023