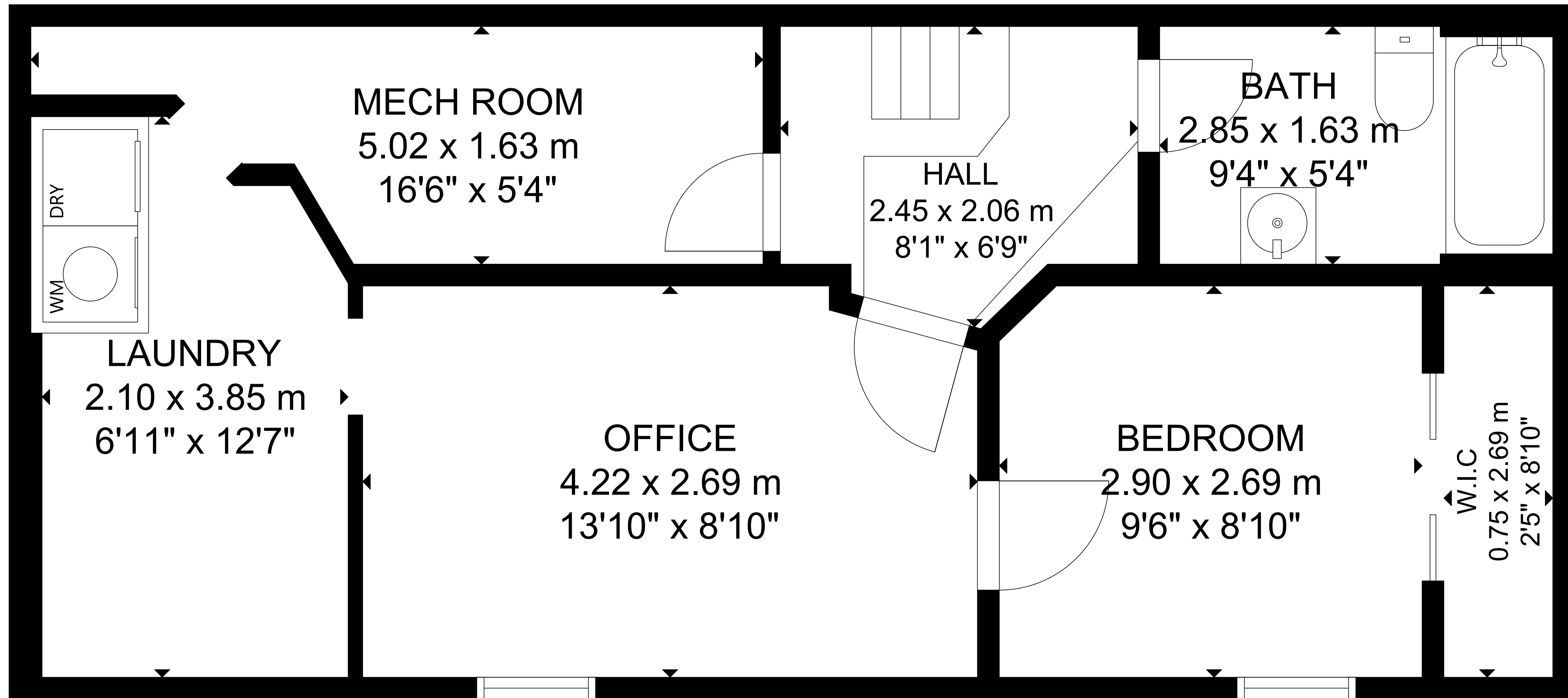


# 12 Wheeler Ave, Toronto



## BASEMENT

**Gross External Area**  
Basement: 502 sq ft, 47 m<sup>2</sup>  
First Floor: 622 sq ft, 58 m<sup>2</sup>  
Second Floor: 621 sq ft, 58 m<sup>2</sup>  
Third Floor: 246 sq ft, 23 m<sup>2</sup>  
**Over All Total: 1,991 sq ft, 186 m<sup>2</sup>**

Measuring & design  
Toronto: 647-834-5881  
Vancouver: 778-680-0161  
Toll Free: 1888-99-360-88  
[www.360homephoto.com](http://www.360homephoto.com)

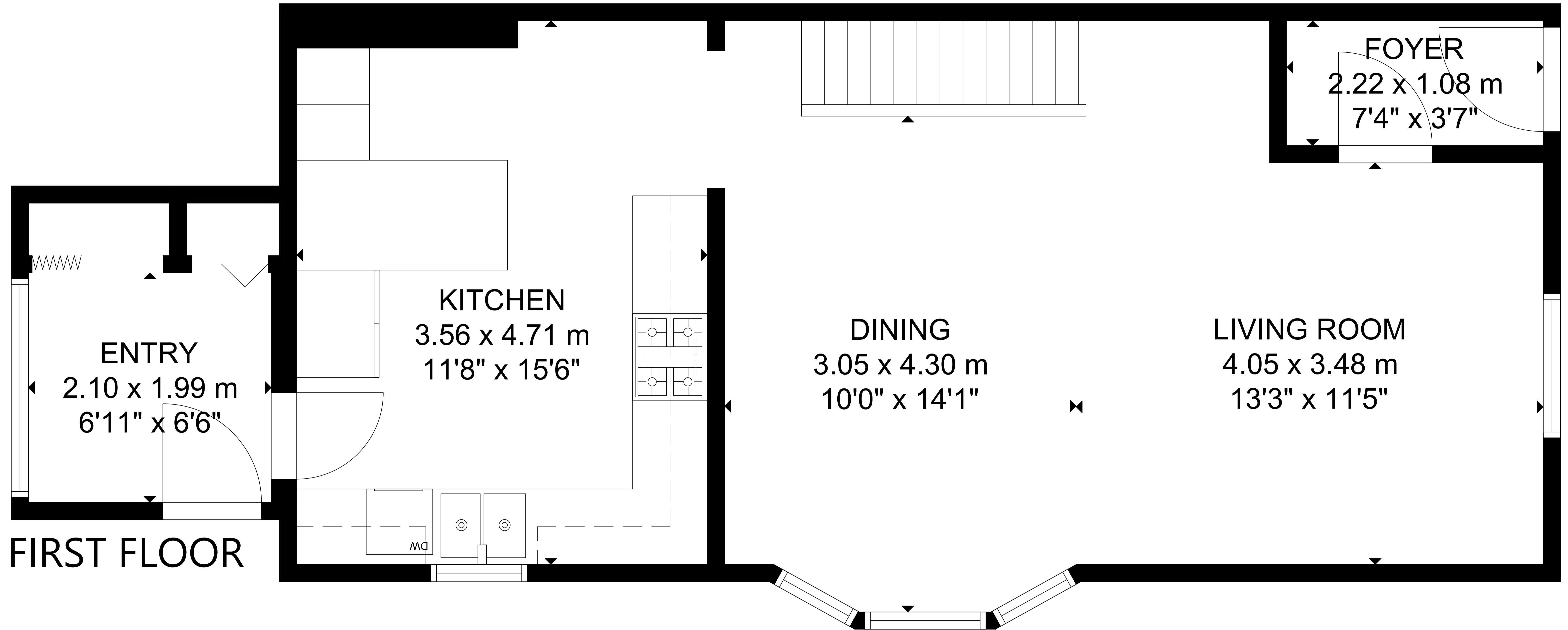
Total Square Foot calculated to gross unit area SQFT based on interior measurements to exterior walls, not taken from original blueprints, may include unfinished area



HOME PHOTOGRAPHY

© 360 Home Photography 2021

# 12 Wheeler Ave, Toronto



**Gross External Area**  
Basement: 502 sq ft, 47 m<sup>2</sup>  
First Floor: 622 sq ft, 58 m<sup>2</sup>  
Second Floor: 621 sq ft, 58 m<sup>2</sup>  
Third Floor: 246 sq ft, 23 m<sup>2</sup>  
**Over All Total: 1,991 sq ft, 186 m<sup>2</sup>**

Measuring & design  
Toronto: 647-834-5881  
Vancouver: 778-680-0161  
Toll Free: 1888-99-360-88  
[www.360homephoto.com](http://www.360homephoto.com)

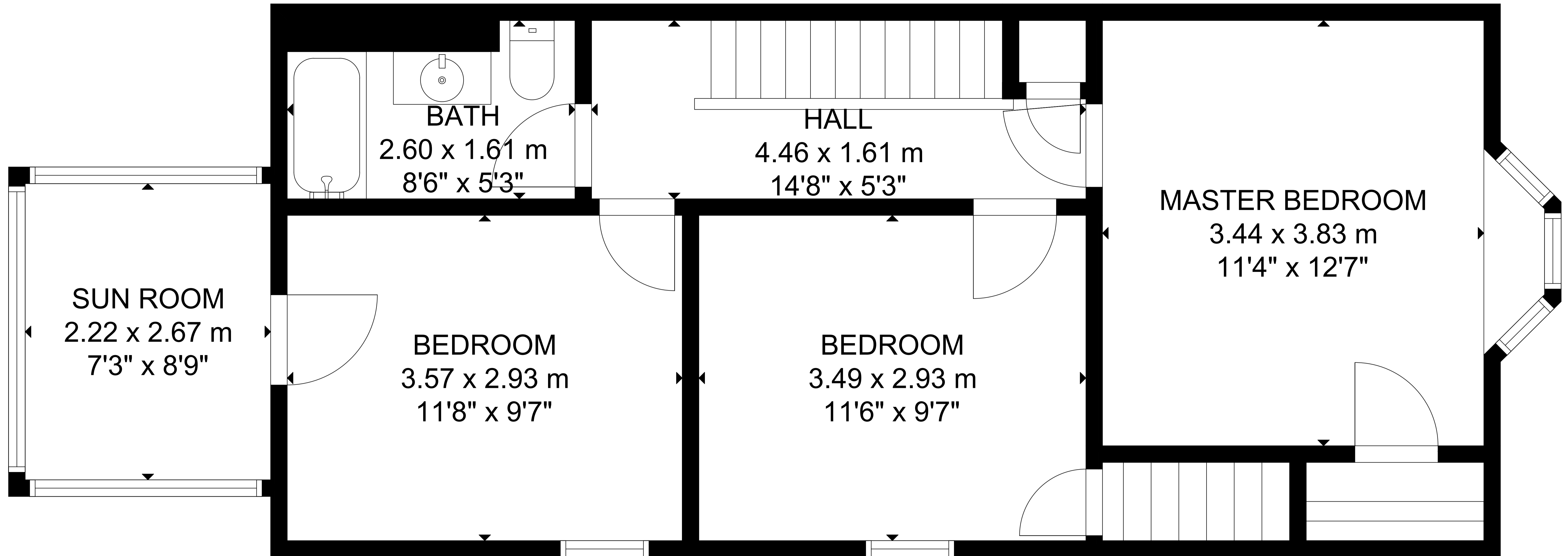
Total Square Foot calculated to gross unit area SQFT based on interior measurements to exterior walls, not taken from original blueprints, may include unfinished area



**HOME PHOTOGRAPHY**

© 360 Home Photography 2021

# 12 Wheeler Ave, Toronto



## SECOND FLOOR

**Gross External Area**  
Basement: 502 sq ft, 47 m<sup>2</sup>  
First Floor: 622 sq ft, 58 m<sup>2</sup>  
Second Floor: 621 sq ft, 58 m<sup>2</sup>  
Third Floor: 246 sq ft, 23 m<sup>2</sup>  
**Over All Total: 1,991 sq ft, 186 m<sup>2</sup>**

Measuring & design  
Toronto: 647-834-5881  
Vancouver: 778-680-0161  
Toll Free: 1888-99-360-88  
[www.360homephoto.com](http://www.360homephoto.com)

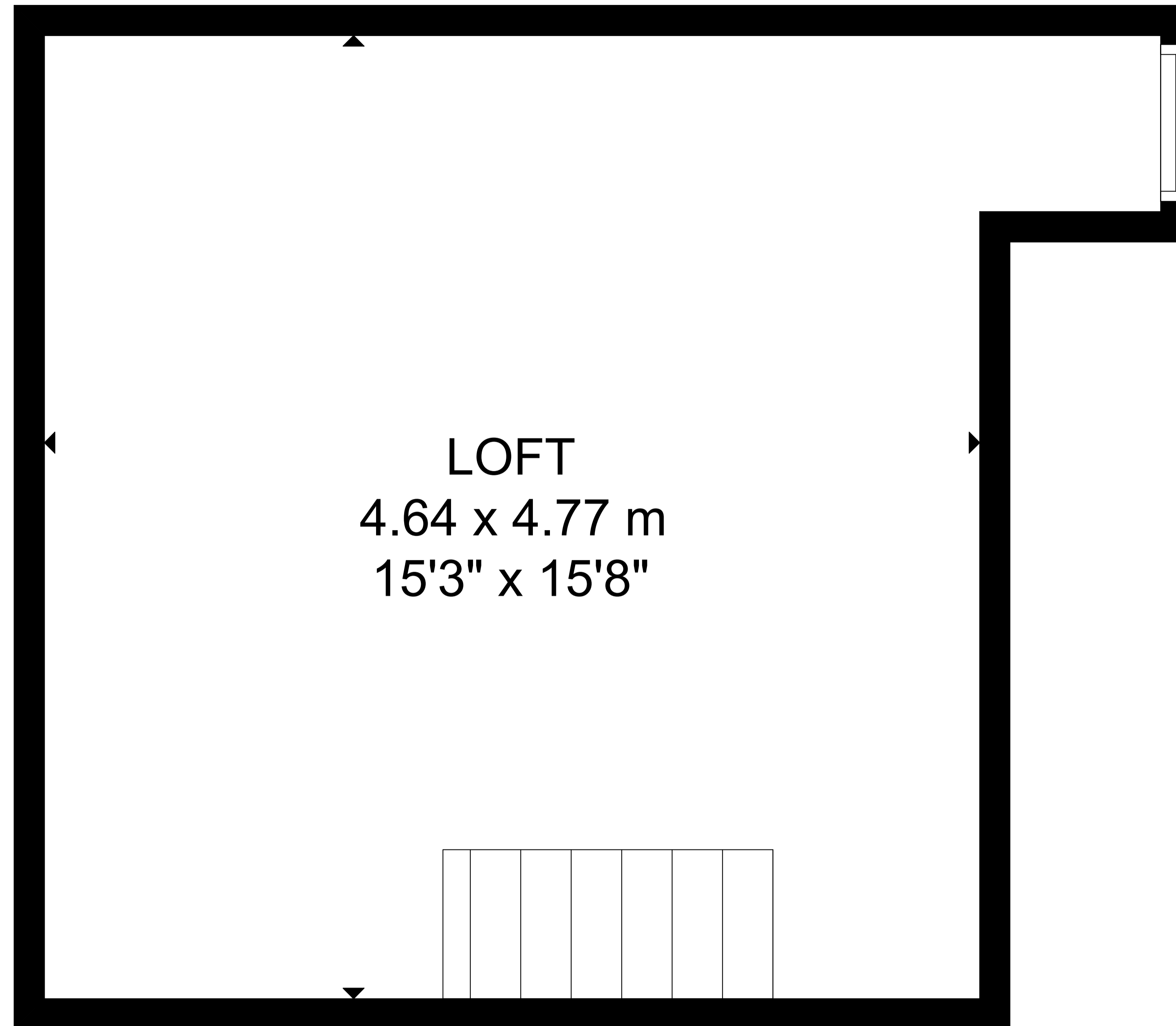
Total Square Foot calculated to gross unit area SQFT based on interior measurements to exterior walls, not taken from original blueprints, may include unfinished area



HOME PHOTOGRAPHY

© 360 Home Photography 2021

# 12 Wheeler Ave, Toronto



## THIRD FLOOR

**Gross External Area**  
**Basement: 502 sq ft, 47 m<sup>2</sup>**  
**First Floor: 622 sq ft, 58 m<sup>2</sup>**  
**Second Floor: 621 sq ft, 58 m<sup>2</sup>**  
**Third Floor: 246 sq ft, 23 m<sup>2</sup>**  
**Over All Total: 1,991 sq ft, 186 m<sup>2</sup>**

Measuring & design  
Toronto: 647-834-5881  
Vancouver: 778-680-0161  
Toll Free: 1888-99-360-88  
[www.360homephoto.com](http://www.360homephoto.com)

Total Square Foot calculated to gross unit area SQFT based on interior measurements to exterior walls, not taken from original blueprints, may include unfinished area

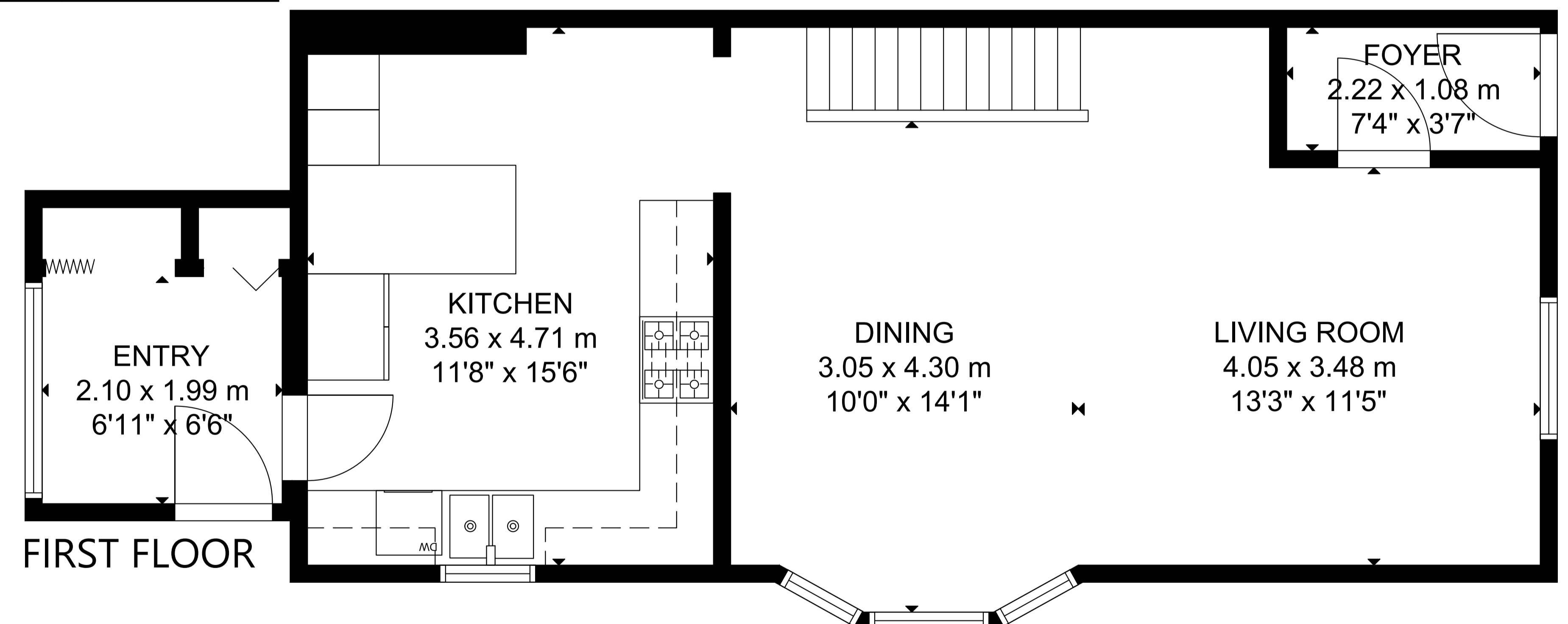
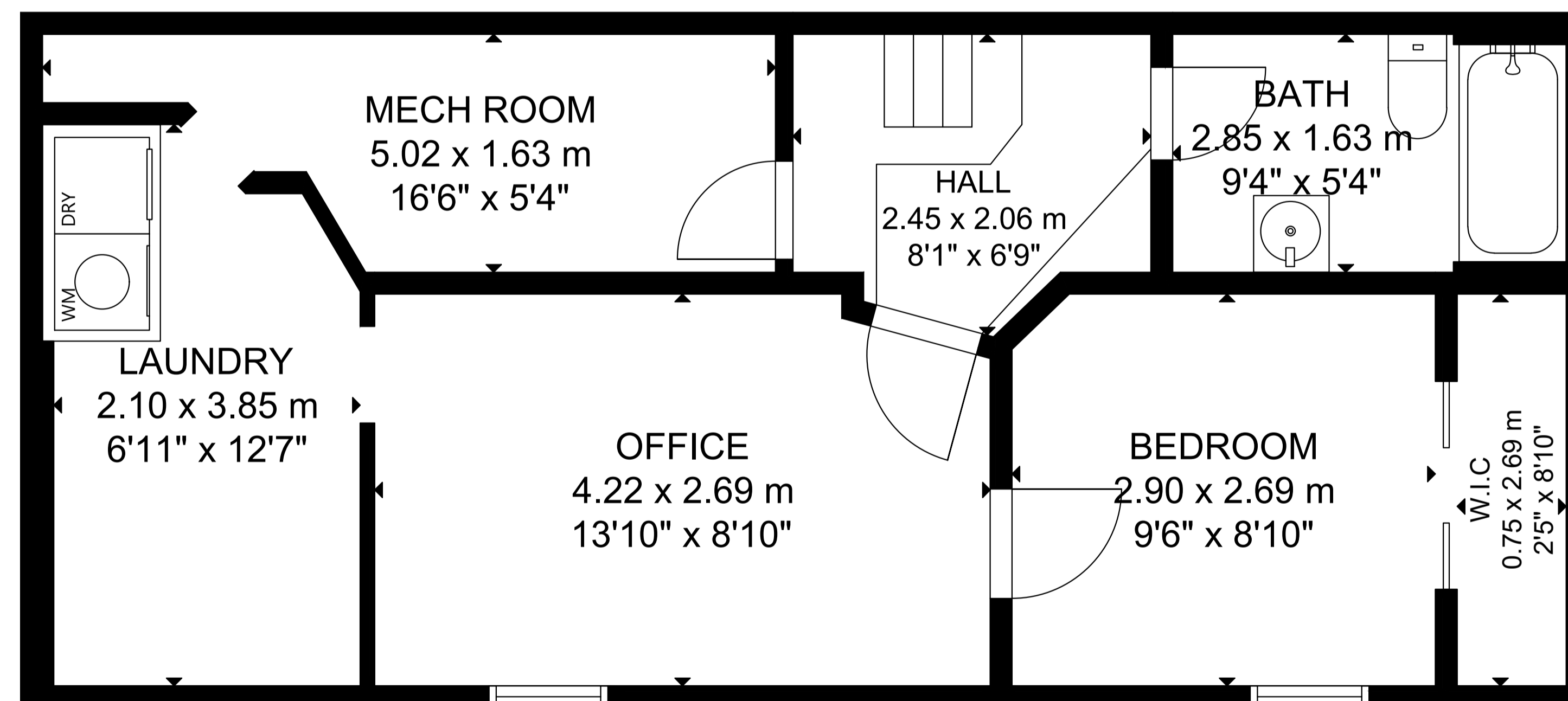
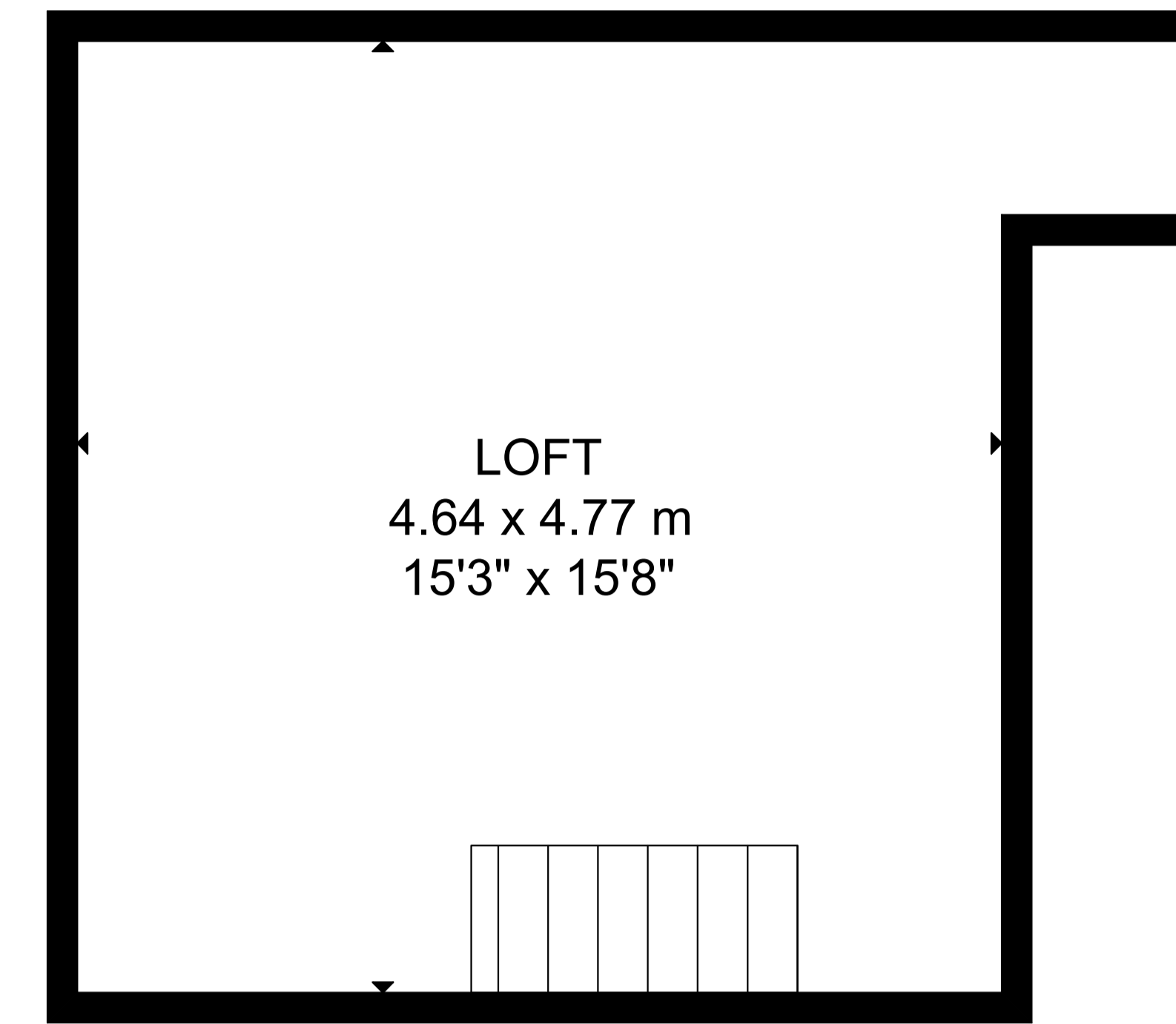
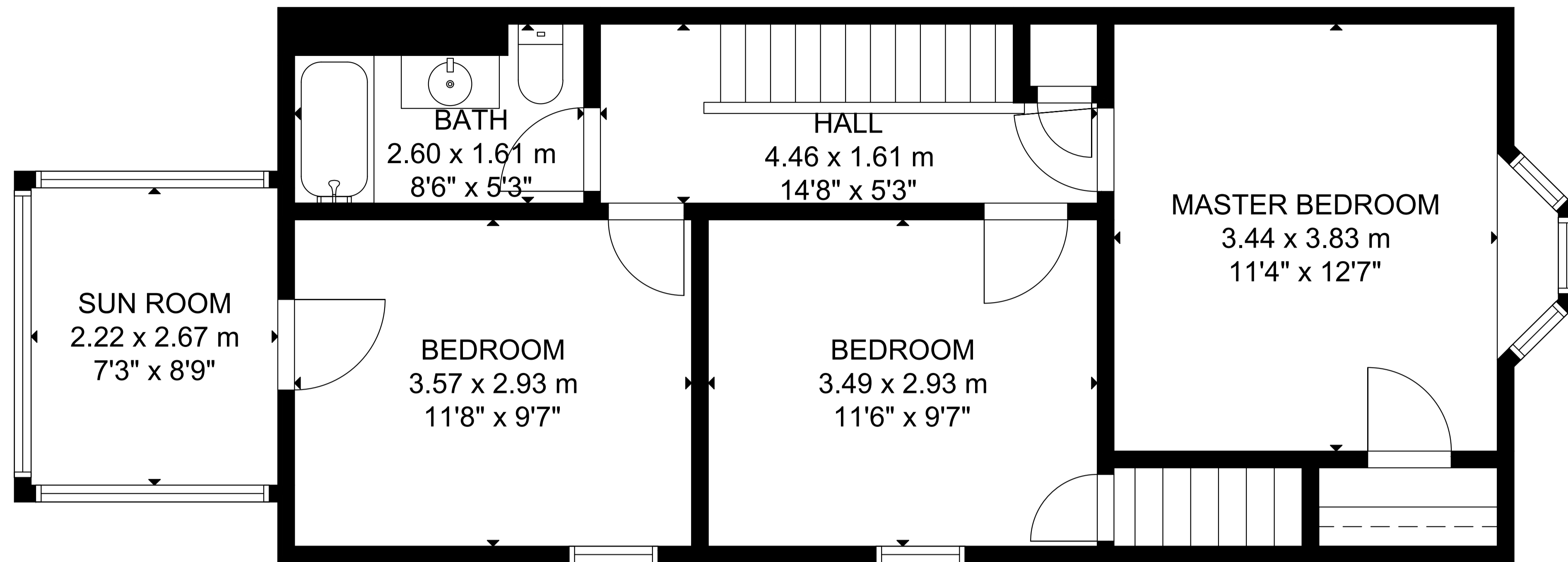


HOME PHOTOGRAPHY

© 360 Home Photography 2021



# 12 Wheeler Ave, Toronto



**Gross External Area**  
**Basement: 502 sq ft, 47 m<sup>2</sup>**  
**First Floor: 622 sq ft, 58 m<sup>2</sup>**  
**Second Floor: 621 sq ft, 58 m<sup>2</sup>**  
**Third Floor: 246 sq ft, 23 m<sup>2</sup>**  
**Over All Total: 1,991 sq ft, 186 m<sup>2</sup>**

Measuring & design  
 Toronto: 647-834-5881  
 Vancouver: 778-680-0161  
 Toll Free: 1888-99-360-88  
[www.360homephoto.com](http://www.360homephoto.com)

Total Square Foot calculated to gross unit area SQFT based on interior measurements to exterior walls, not taken from original blueprints, may include unfinished area



HOME PHOTOGRAPHY

© 360 Home Photography 2021