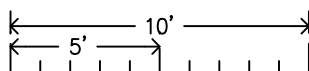
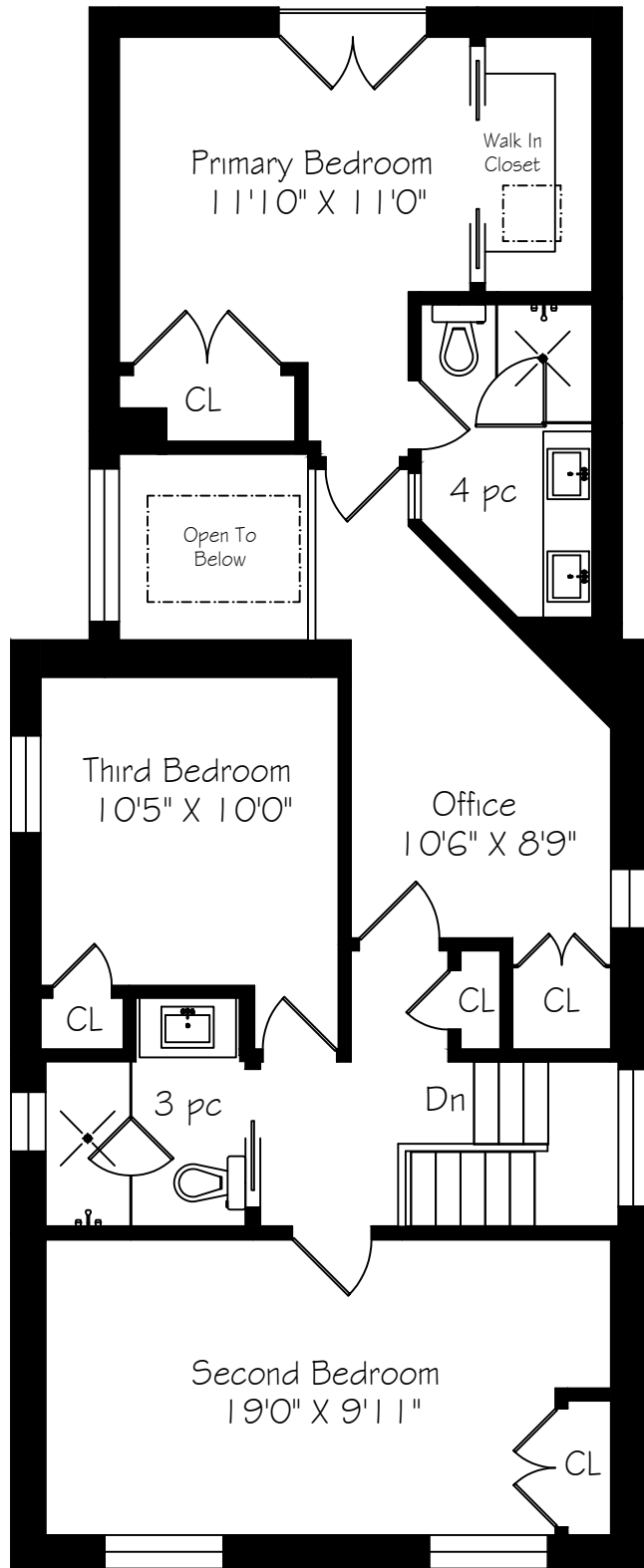


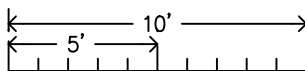
Main Floor
1087 Square Feet



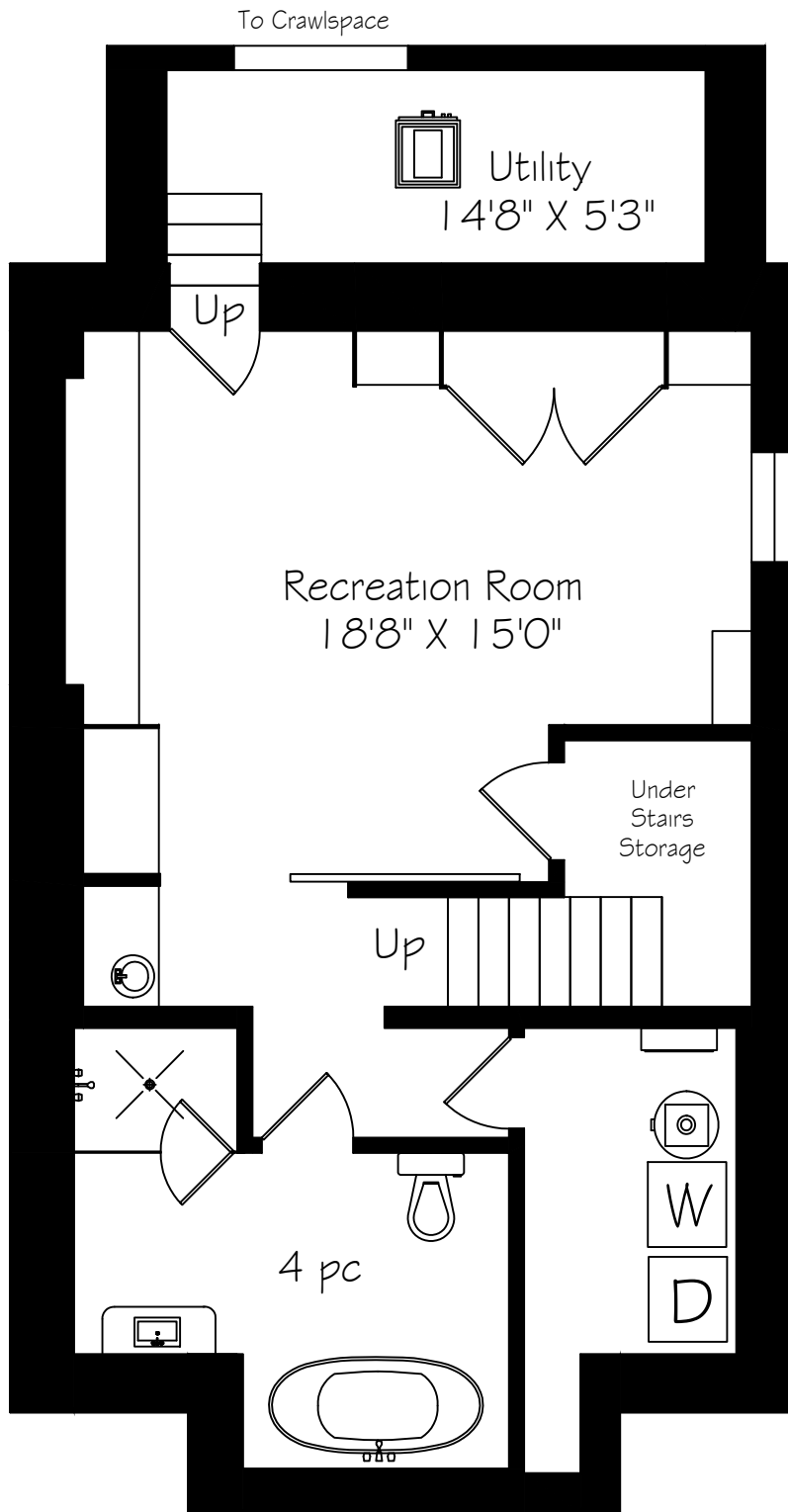
Measurements and Calculations are approximate
To be used as guidelines only



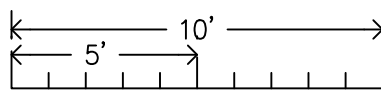
Second Floor
1014 Square Feet



Measurements and Calculations are approximate
To be used as guidelines only



Lower Level
811 Square Feet



Measurements and Calculations are approximate
To be used as guidelines only

Metric Conversions for 200 Bessborough Drive



www.measuredup.ca

416-985-9859

Measurements and Calculations are approximate
To be used as guidelines only

	IMPERIAL			METRIC				
Main Floor	1087	sf		101	sqm		Ceiling Height	8'4"
Foyer	11'	0"	x 5' 6"	3.35	x	1.68		
Kitchen	13'	6"	x 10' 1"	4.11	x	3.07		
Breakfast Area	15'	11"	x 7' 5"	4.85	x	2.26		
Living Room	17'	2"	x 12' 10"	5.23	x	3.91		
Dining Room	12'	2"	x 8' 10"	3.71	x	2.69		
Family Room	15'	11"	x 12' 6"	4.85	x	3.81	Ceiling Height	9'6"
Second Floor	1014	sf		94	sqm		Ceiling Height	7'10"
Primary Bedroom	11'	10"	x 11' 0"	3.61	x	3.35		
Office	10'	6"	x 8' 9"	3.20	x	2.67		
Second Bedroom	19'	0"	x 9' 11"	5.79	x	3.02		
Third Bedroom	10'	5"	x 10' 0"	3.18	x	3.05		
Lower Level	811	sf		75	sqm		Ceiling Height	8'2"
Recreation Room	18'	8"	x 15' 0"	5.69	x	4.57		
Utility Room	14'	8"	x 5' 3"	4.47	x	1.60		
Laundry Room	8'	10"	x 5' 9"	2.69	x	1.75		
Total Above Grade	2101	sf		195	sqm			
Total Square Footage	2912	sf		271	sqm			November 16, 2020